

FLOW: 60 L/MIN

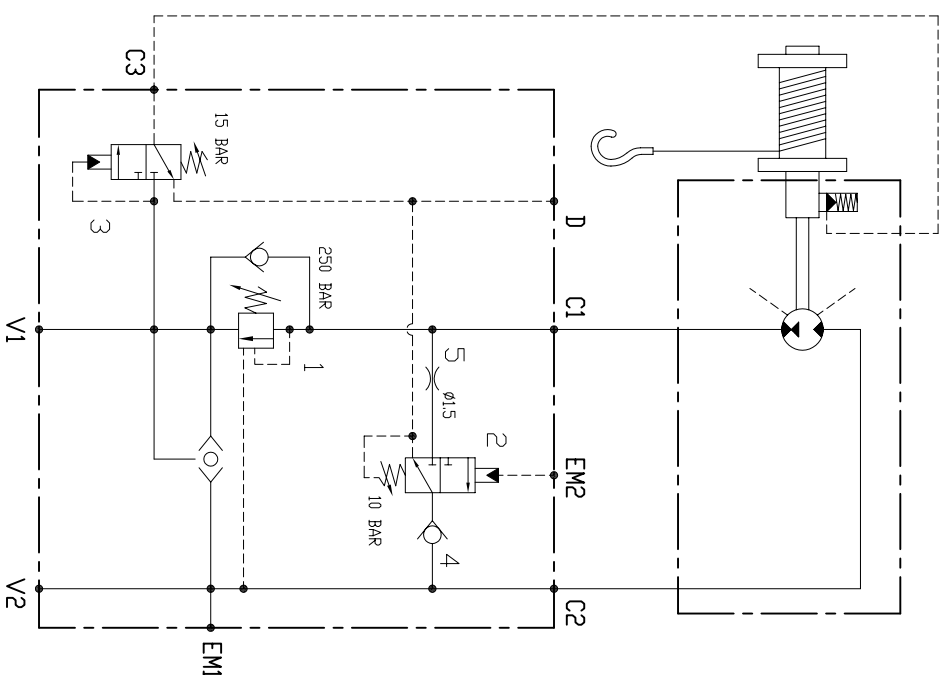
Max PRESSURE: 350 BAR

PORTS:

V1, V2, C1, C2 : 1/2" BSPP

D : 3/8" BSPP

EM1, EM2: 1/4" BSPP



PRODOTTO	SPECIAL VALVE	G. FLUID INGEGNERIA FLUIDODINAMICA MODENA ITALY
DISEGNATO	GVS-W-VB-PS-001-BRE	
VISTO	Ranfieri C.	
SCALA	DATA	DISN.
--	18.01.07	
		001.01.07.00