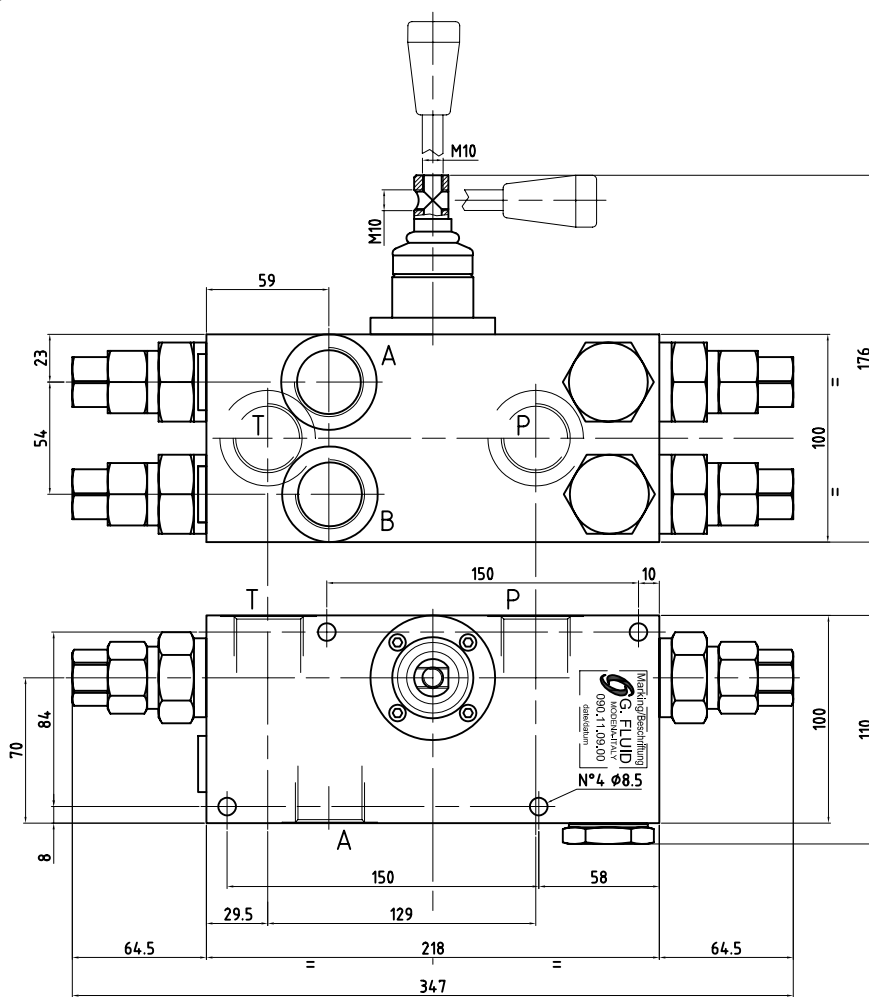
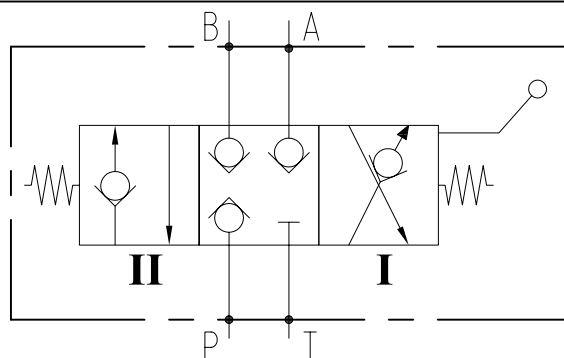


**TECHNICAL DATA  
TECHNISCHE ANGABEN**

Max operating pressure Maximaler Betriebsdruck	30 MPa 4266 psi
Max flow Volumenstrom	120 l/min 31.7 gpm
Temperature range Betriebstemperatur	-20°/80°C
Filtration Filtergrad	40µ
Weight/Material Gewicht/Material	18 kg
Material Material	Zinc coated Steel Verzinkter Stahl


**PORT SIZE  
GEWINDE**

A, B, T, P	G 1"

**ORDERING INSTRUCTIONS - BESTELLANLEITUNG**
**090.11.09.00**