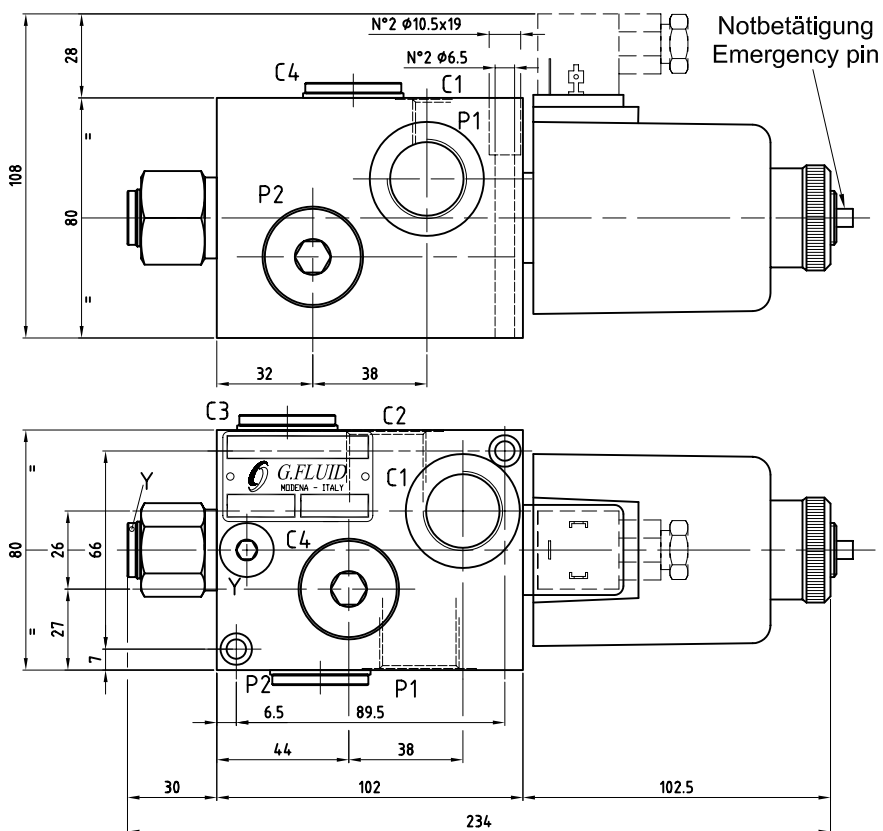
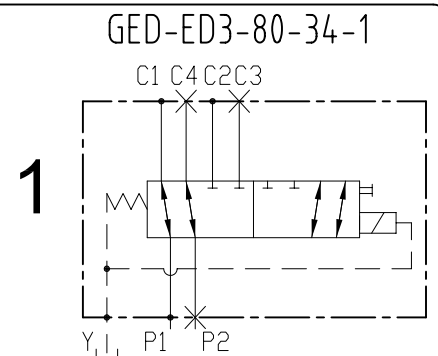
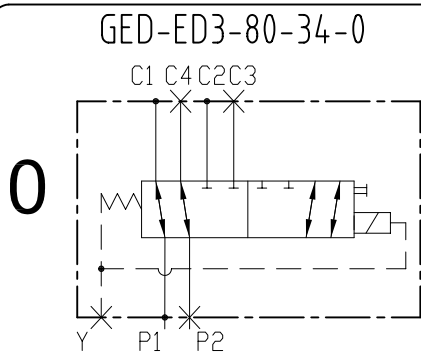


TECHNICAL DATA
TECHNISCHE ANGABEN

Max operating pressure Maximaler Betriebsdruck	35 MPa 5076 psi
Max flow Volumenstrom	80 l/min 21.1 gpm
Temperature range Betriebstemperatur	-20°/80°C
Filtration Filtergrad	40μ
Weight Gewicht	5.1 kg
Material Material	Zincoated Steel Verzinkter Stahl


ORDERING CODE - ARTIKELNUMMER
1643331 0 0

0	Scheme Schema	1	Voltage Spannung	4	Port size/Gewinde
1	GED-ED3-80-34-0	2	12 VDC		P1, P2, C1, C2, C3, C4 Y
	GED-ED3-80-34-1		24 VDC		G 3/4" G 1/8"